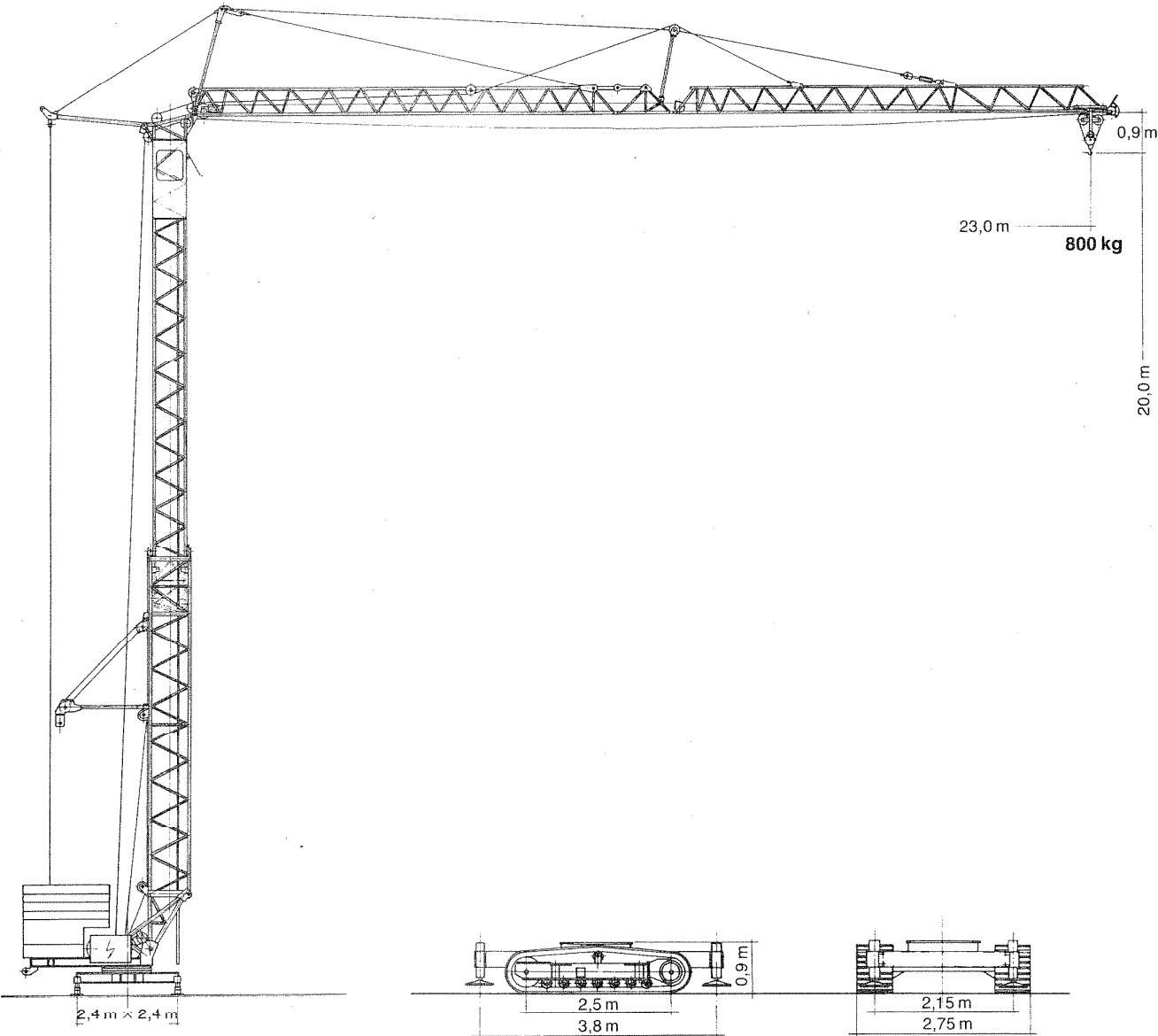
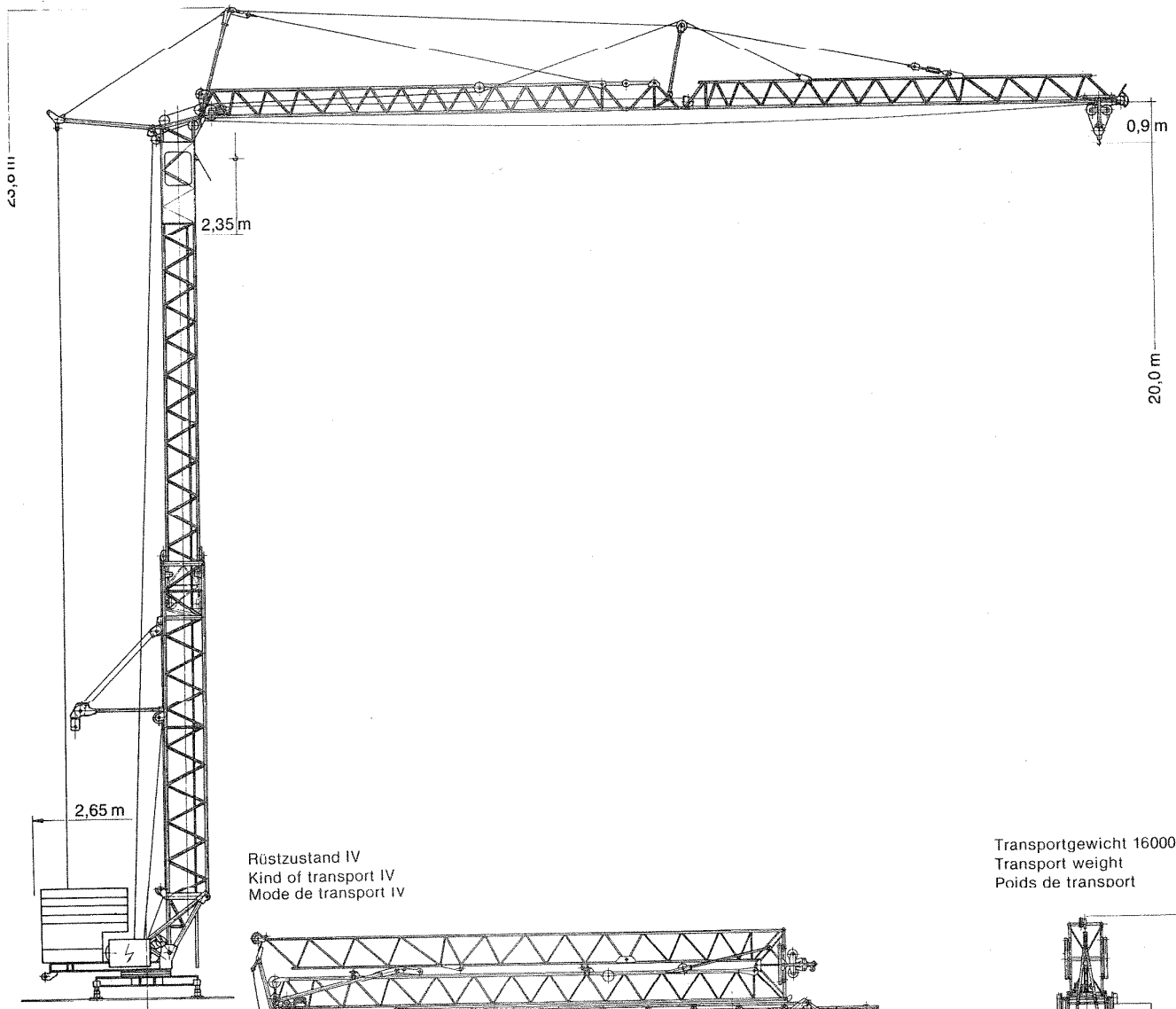


**Tower Crane
Grue à tour**

Turmdrehkran 21 K

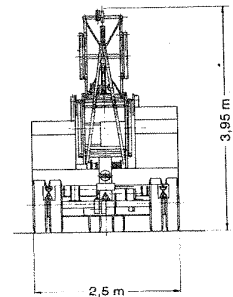
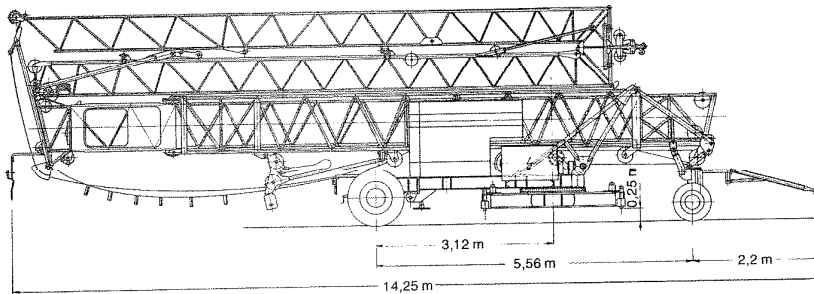


LIEBHERR



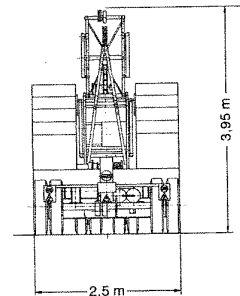
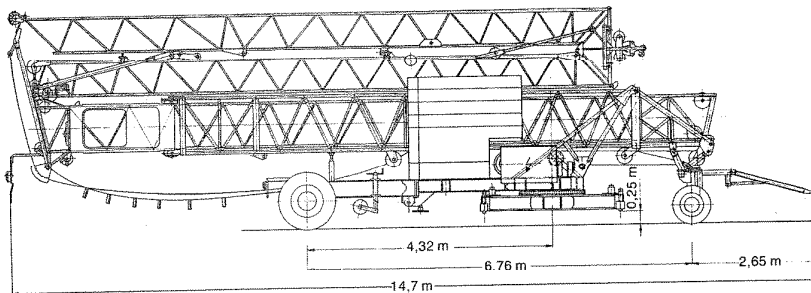
Rüstzustand IV
Kind of transport IV
Mode de transport IV

Transportgewicht 16000 kg
Transport weight
Poids de transport



Rüstzustand V
Kind of transport V
Mode de transport V

Transportgewicht 20000 kg
Transport weight
Poids de transport



21 K

Gewicht

Weight Poids

Max. Eckkraft in Betrieb Max. corner pressure in operation Réaction max. par angle en service	125 kN
Max. Eckkraft außer Betrieb Max. corner pressure out of operation Réaction max. par angle hors service	75 kN

1 kN \approx 100 kp

Gegengewicht ca. Counter weight approx. Contrepoids env.	12000 kg
Konstruktionsgewicht Dead weight Poids de la construction	6250 kg

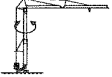
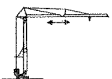
Ausladung und Tragfähigkeit

Radius and capacity Portée et charge

Auslegerlänge Length of jib Longueur de flèche m	Max. Tragfähigkeit Max. capacity Charge max. m/kg	Ausladung und Tragfähigkeit m/kg Radius and capacity Portée et charge										
		13,0	14,0	15,0	16,0	17,0	18,0	19,0	20,0	21,0	22,0	23,0
23,0	2,35 – 12,0 1750	1590	1450	1340	1240	1160	1080	1010	950	890	850	800

Geschwindigkeiten

Speeds Vitesses

	U/min 1,0 st./min tr./mn	2,2 kW
	30,0 m/min	1,0 kW

Hubwerk Hoist gear Mécanisme de levage	Gang Gear Boite	kg	m/min
9,7 kW	1	1750	6,0
	2	1750	27,0
	3	1000	55,0

Kabelquerschnitt bei 380 V
Cross section of cable
Section of câble à
Betriebsspannung 380 V
Operating voltage
Tension de service

bis 20 m
up to
jusqu'à
Frequenz 50 Hz
Frequency
Fréquence

4 × 6 mm²

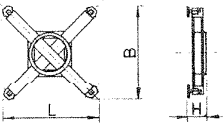
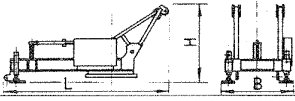
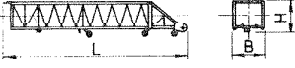

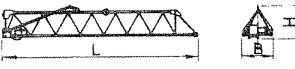

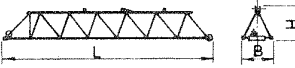
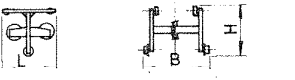
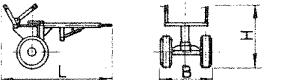
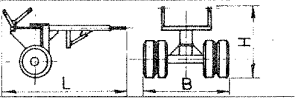
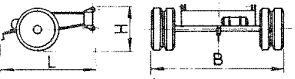

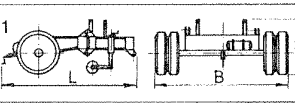
bis 28 m
up to
jusqu'à
Gesamtmotorenleistung 12,9 kW
Total motor output
Puissance totale des moteurs

4 × 10 mm²

Technische Daten - Technical data Caractéristiques techniques

Kolli-Liste

Packing List Liste de colisage

Pos. Item Rep.	Anzahl Quantity Qté	Benennung Description Désignation		Länge m Length m Longueur m	Breite m Width m Largeur m	Höhe m Height m Hauteur m	Gewicht kg Weight kg Poids kg
1	1	Unterswagen kompl. Undercarriage compl. Chassis compl.		2,70	2,70	0,30	1000
2	1	Drehbühne kompl. Revolving platform compl. Plate-forme tournante complète		4,20	2,30	2,50	2000
3	1	Turm-Unterteil Tower (lower part) Tour inférieure		0,00	1,00	1,20	080
4	1	Turm-Oberteil Tower (upper part) Tour supérieure		12,30	0,80	1,40	940
5	1	Ausleger-Anlenkstück Jib pivoting section Élément de pied de flèche		10,50	0,85	0,80	450
6	1	Ausleger-Zwischenstück Jib middle piece Flèche intermédiaire		1,50	0,75	0,70	60
7	1	Ausleger-Kopfstück Jib head piece Pointe de flèche		10,70	0,85	0,80	240
8	1	Laufkatze kompl. Trolley compl. Chariot distributeur compl.		0,90	1,00	0,85	70
9	1	Transportachse vorne Tra 50 KW 1 Road transport axle front Essieux de transport avant		2,80	1,10	1,40	360
10	1	Transportachse vorne Tra 100 KY 1 Road transport axle front Essieux de transport avant		3,30	1,20	1,40	505
11	1	Transportachse hinten Tra 120 GY 1, Tra 140 GY 1 Road transport axle behind Essieux de transport arrière		1,90	2,50	1,05	1150
12	1	Transportachse hinten mit langem Adapter Tra 120 GY 1, Tra 140 GY 1 Road transport axle behind with long extension piece Essieux de transport arrière avec adaptateur long		3,10	2,50	1,40	1250
13	1	Transportachse hinten mit kurzem Adapter Tra 120 GY 1, Tra 140 GY 1 Road transport axle behind with short extension piece Essieux de transport arrière avec adaptateur court		3,10	2,50	1,40	1450
14	1	Kiste mit Seilen und Kleinteilen Case with ropes and small parts Caisse avec câbles et pièces détachées		1,00	0,80	0,80	500

Datenblatt Nr. 120 P - 2037 - DIN 15018 und OENORM T 3 - 3. 80
Data sheet
Feuille de caractéristiques

Konstruktionsänderungen vorbehalten!
Subject to alterations!
Sous réserves de modifications!

Printed in Fed. Rep. of Germany

**Nehmen Sie Kontakt auf mit
Contact**

**Mettez-vous en rapport avec
LIEBHERR-WERK BIBERACH GMBH, Postfach 1068, D-7950 Biberach an der Riss 1,
Telefon (07351) 41-0, Telex 71802**