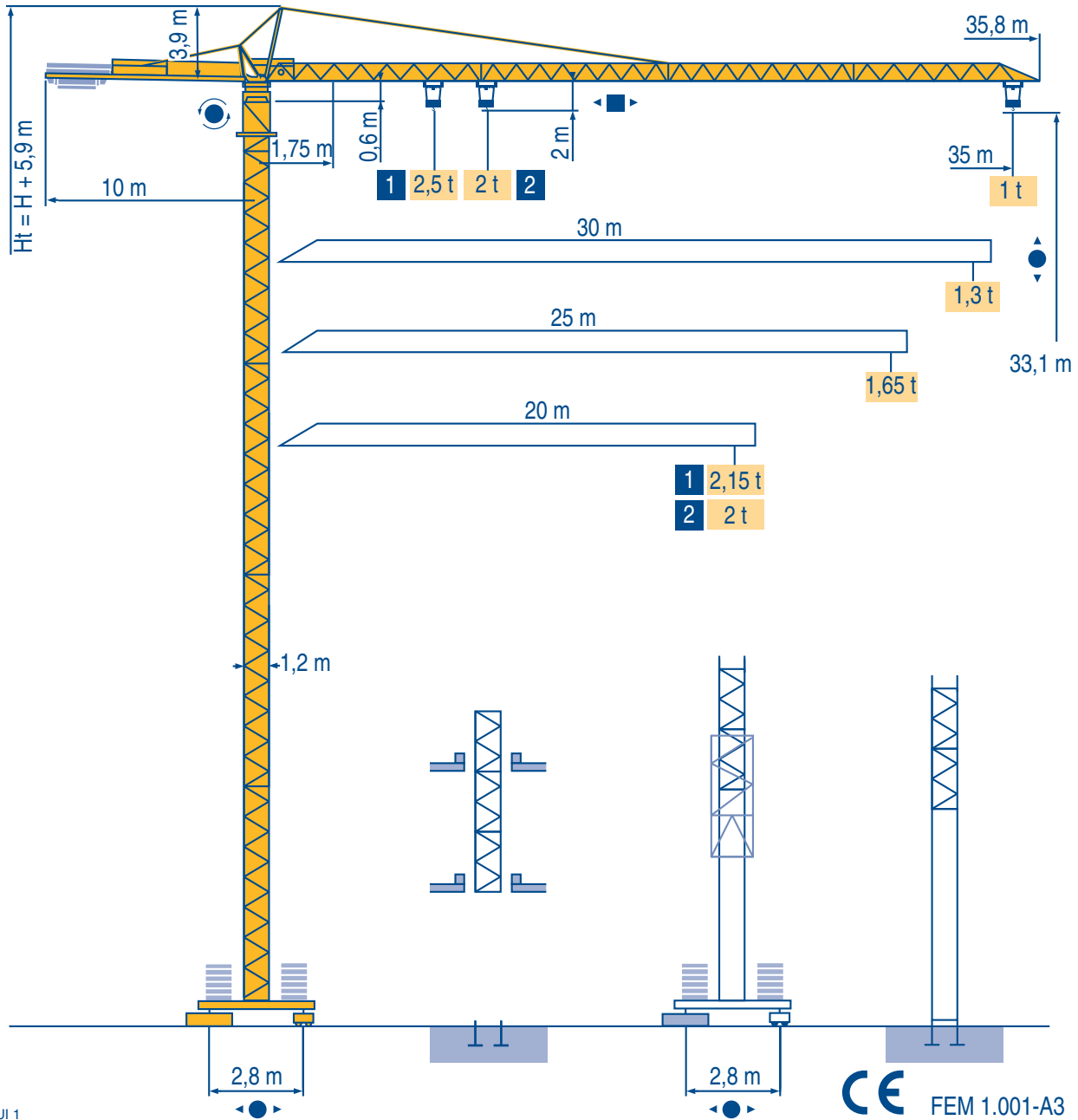


CITY CRANE MC 48 B



Igo
HD
HDM



HDT



GTMR



CITY CRANE



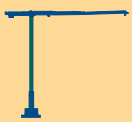
TOPKIT MD
MAXI MD



MAXI TOPKIT



Topless MDT



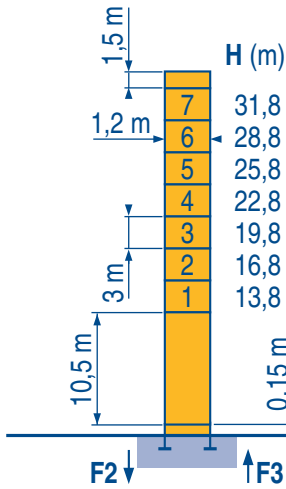
MR





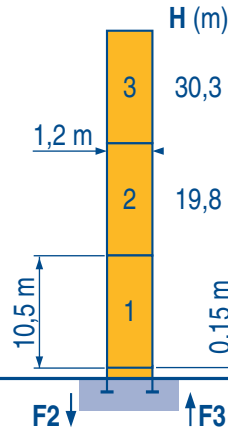
∅ 1,2 m

20 m → 35 m



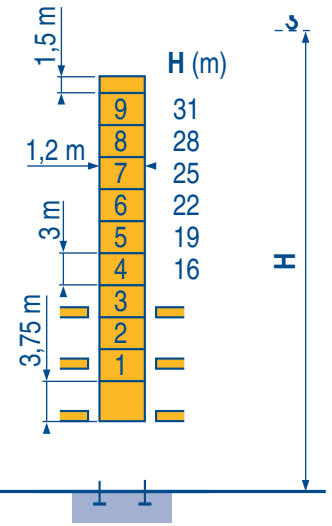
P 12 B

F2	● 41 t	■ 66 t
F3	● 30 t	■ 57 t
👤	14 t	

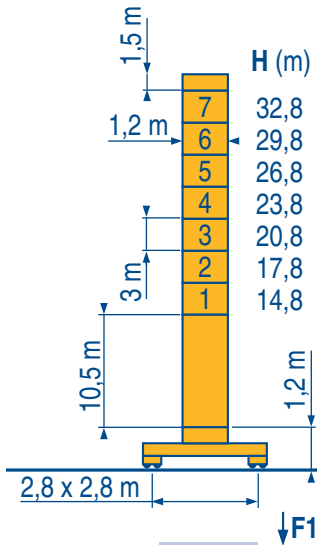


P 12 B

F2	● 37 t	■ 55 t
F3	● 28 t	■ 47 t
👤	11 t	

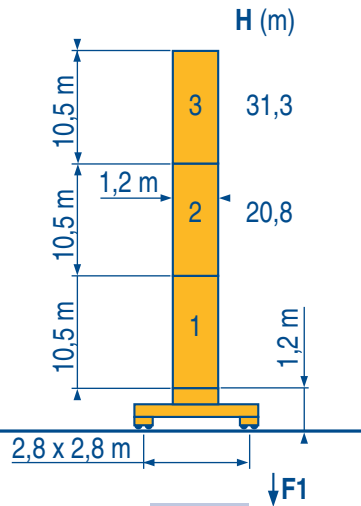


B 122 A / P 12 B



ZK 12 B

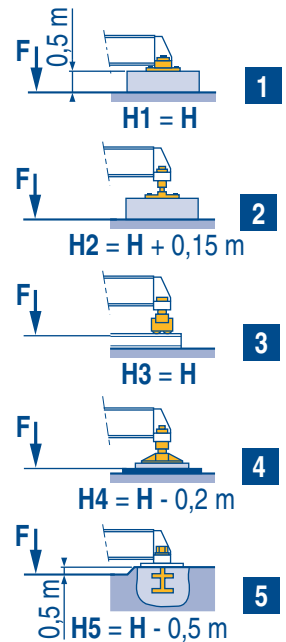
F1	● 37 t	■ 54 t
👤	17 t	



ZK 12 B

F1	● 34 t	■ 45 t
👤	14 t	

ZK



LUI 2



Voir télescopage sur dalles
Réactions en service
Réactions hors service
A vide sans lest (ni train de transport) avec flèche et hauteur maximum.



See climbing crane
Reactions in service
Reactions out of service
Without load, ballast (or transport axles), with maximum jib and maximum height.



Consultare gru in cavedio
Reazioni in servizio
Reazioni fuori servizio
A vuoto, senza zavorra (ne assali di trasporto) con braccio massimo e altezza massima.



Siehe Kletterkrane im Gebäude
Reaktionskräfte in Betrieb
Reaktionskräfte außer Betrieb
Ohne Last, Ballast (und Transportachse), mit Maximalausleger und Maximalhöhe.



Veja grua trepadora
Reacciones en servicio
Reacciones fuera de servicio
Sin carga, sin lastre, (ni tren de transporte), flecha y altura máxima.



見楼板顶升
工作状态下的反应
非工作状态下的反应
空载无压重也无运输车
有吊臂和最大高度



		1,75 ▶	16,4	19,8	20	22	25	27	30	32	35	m
35 m	👉	2,5	-	1,98	1,77	1,52	1,38	1,22	1,12	1	1	t
👉👉	👉	2	-	1,77	1,52	1,38	1,22	1,12	1	1	1	t
		1,75 ▶	17,3	20	20,9	22	25	27	30			m
30 m	👉	2,5	2,1	-	1,89	1,62	1,48	1,3				t
👉👉	👉	2	1,89	1,62	1,48	1,3						t
		1,75 ▶	17,5	20	21,2	22	25					m
25 m	👉	2,5	2,15	-	1,92	1,65						t
👉👉	👉	2	1,92	1,65								t
		1,75 ▶	17,6	20								m
20 m	👉	2,5	2,15									t
👉👉	👉	2										t

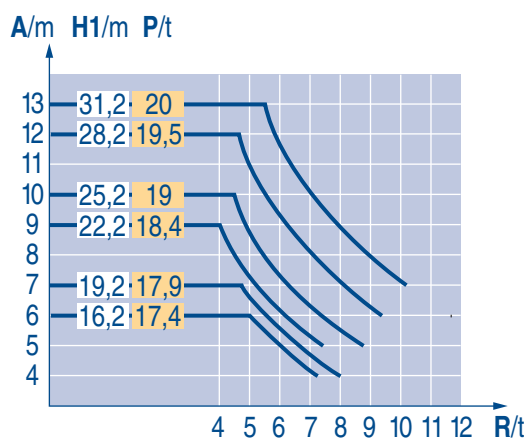
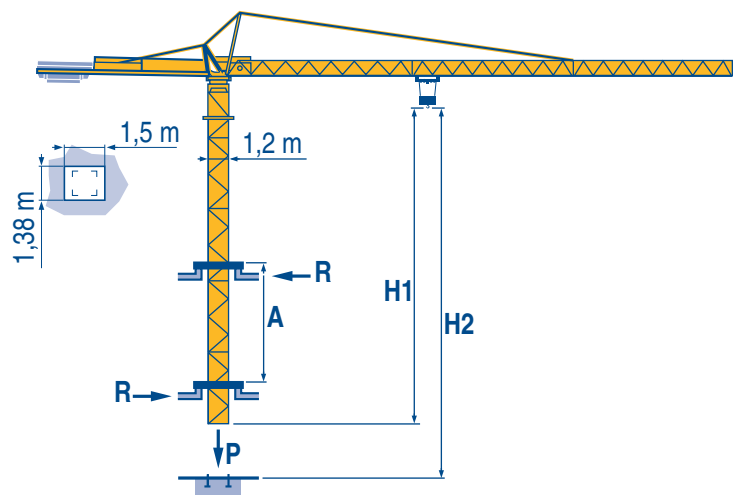
LUI 1

Télescopage sur dalles
Kletterkrane im Gebäude

F Climbing crane
D Telescopage gruas trepadoras

GB Gru in cavedio
E 楼板上顶升

B 122 A



LUI 1

A Distance entre cadres
H1 Hauteur grue
P Poids de la grue (en service)
R Réaction horizontale

F Distance between collars
Crane height
Crane weight (in service)
Horizontal reaction

GB Distanza fra i telai
Altezza gru
Peso della gru (in servizio)
Reazione orizzontale

A Abstand zwischen den Rahmen
H1 Kranhöhe
P Krangewicht (in Betrieb)
R Horizontalkräfte

D Distancia entra marcos
Altura grúa
Peso de la grúa (en servicio)
Reaccion horizontal

E 各附着框之间距离
工作状态 下塔机高度
工作状态 下塔机重量
水平反力

					ch - PS hp	kW		
	9 RPC 10	m/min	7	21	42	8,2	6	115 m
		t	2	2	1			
	15 PC 13	m/min	7,5	22	44	15	11	89 m
		t	2,5	2,5	1,3			
	1 D2 V1	m/min	18 - 36			1,2	0,9	
	RCV 40	tr/min U/min rpm	0 → 0,8			6	4,5	
	TVD 324	m/min	26			2 x 4	2 x 2,9	

CEI 38	IEC 38	kVA	
400 V (+6% -10%) 50 Hz		9 PC : 15 kVA 15 PC : 20 kVA	84/534 - 87/405

LUI 1

Levage
 Distribution
 Orientation
 Translation
 Conforme aux directives CEE 84/534 et 87/405 sur le niveau acoustique

F

Hoisting
Trolleying
Slewing
Travelling
In compliance with the EEC 84/534 and 87/405 Instructions on noise level

GB

Sollevamento
Distribuzione
Rotazione
Traslazione
Conforme alle direttive CEE 84/534 e 87/405 sul livello acustico

I

Heben
 Kاتفahren
 Schwenken
 Kranfahren
 Gemäss EWG-Richtlinien 84/534 und 87/405 für den Schall-Leistungspegel

D

Elevación
Distribución
Orientación
Traslación
Conforme con las directivas CEE 84/534 y 87/405 sobre el nivel acustico

E

起升
变幅
回转
行走
符合 CEE 84/534 - CEE 87/405 声晌度规定

C