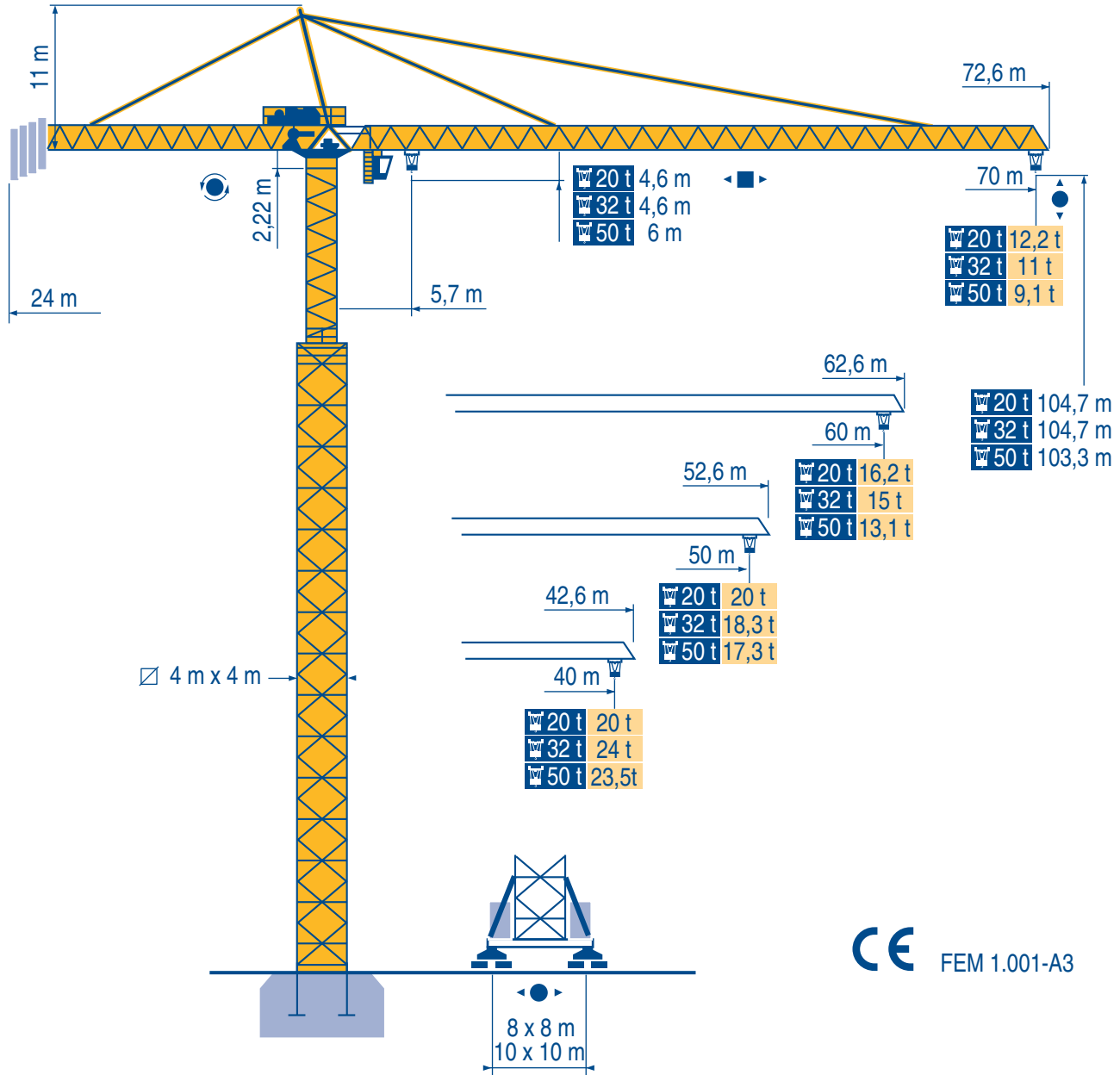


MD 900



Igo
HD
HDM



HDT



GTMR



CITY CRANE



TOPKIT MD
MAXI MD



MAXI TOPKIT



Topless MDT



MR



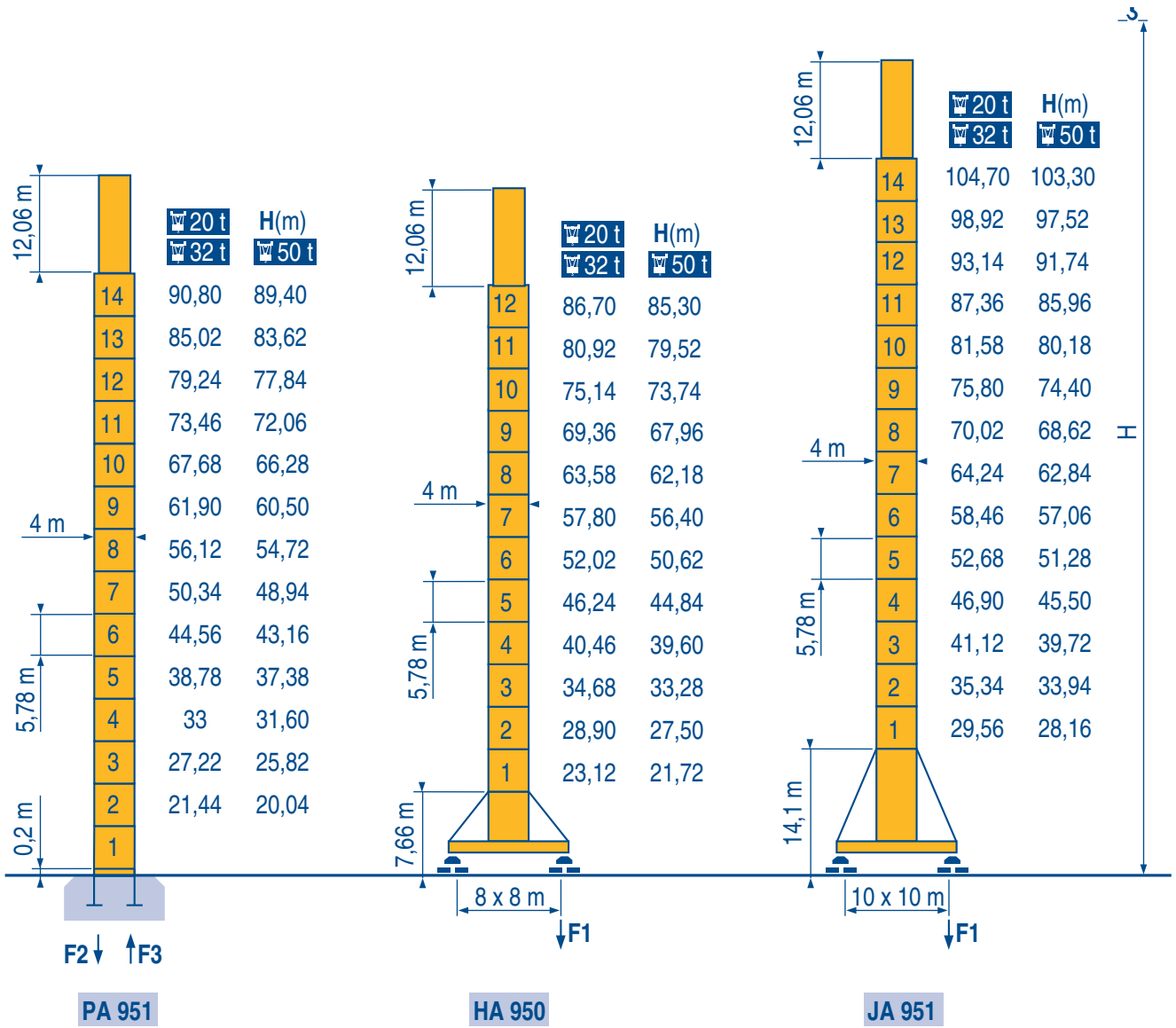
CE FEM 1.001-A3



POTAIN

LNH 1

4 m x 4 m



F2	20 t	● 247 t	■ 260 t
	32 t	● 251 t	■ 261 t
	50 t	● 287 t	■ 259 t

F3	20 t	● 118 t	■ 139 t
	32 t	● 130 t	■ 139 t
	50 t	● 136 t	■ 131 t

196 t

F1	20 t	● 195 t	■ 186 t
	32 t	● 191 t	■ 187 t
	50 t	● 221 t	■ 187 t

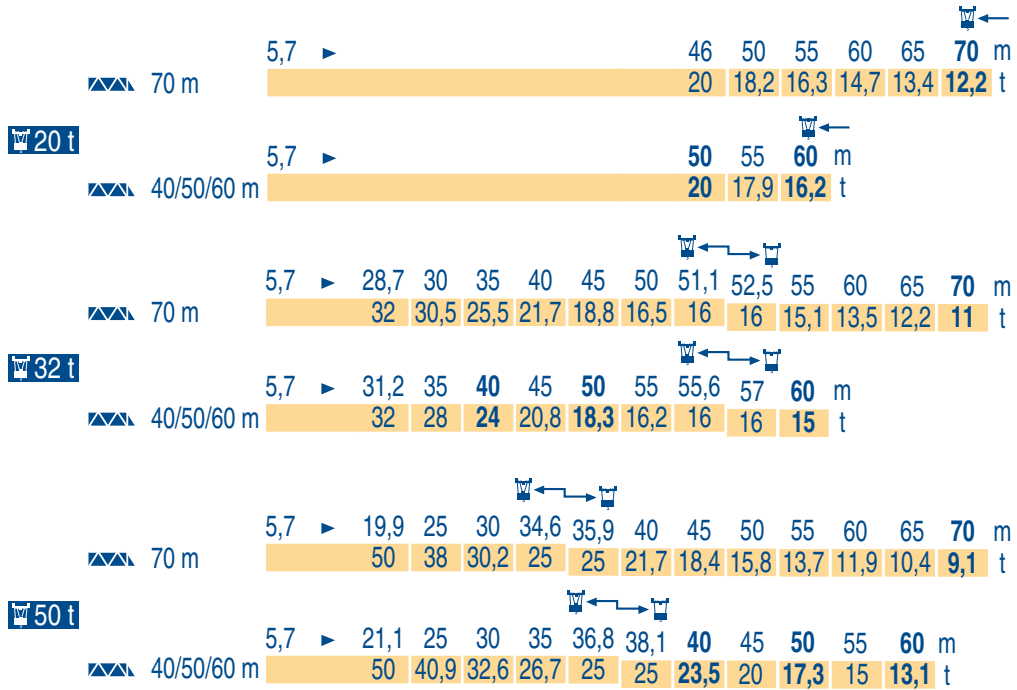
218 t

F1	20 t	● 197 t	■ 245 t
	32 t	● 195 t	■ 245 t
	50 t	● 218 t	■ 242 t

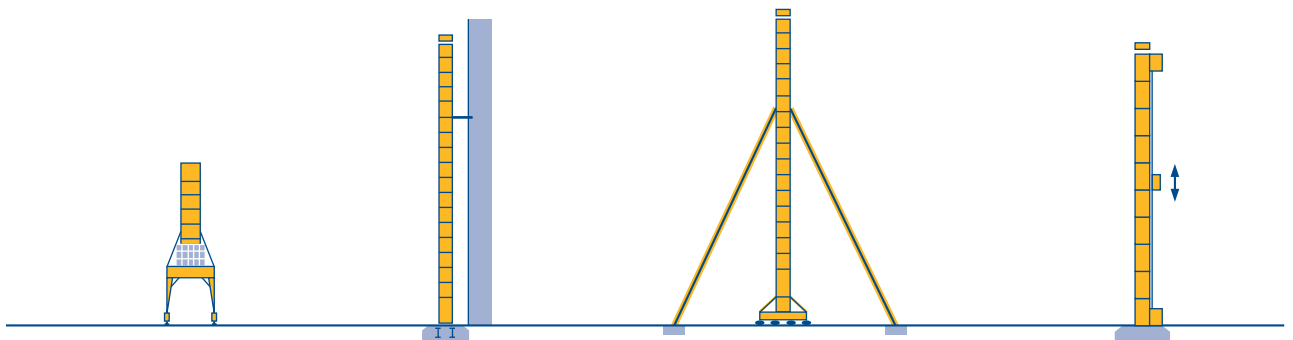
258 t

LNH 1

● Réactions en service ■ Réactions hors service A vide sans lest (ni train de transport) avec flèche et hauteur maximum.	F Reactions in service Reactions out of service Without load, ballast (or transport axles), with maximum jib and maximum height.	GB Reazioni in servizio Reazioni fuori servizio A vuoto, senza zavorra (ne assali di trasporto) con braccio massimo e altezza massima.	I
● Reaktionskräfte in Betrieb ■ Reaktionskräfte außer Betrieb Ohne Last, Ballast (und Transportachse), mit Maximalausleger und Maximalhöhe.	D Reacciones en servicio Reacciones fuera de servicio Sin carga, sin lastre, (ni tren de transporte), flecha y altura máxima.	E 工作状态下的反应 非工作状态下的反应 空载无压重也无运输车 有吊臂和最大高度	C



LNH 1



LNH 1



Nous consulter

Consult us

Consultateci



Auf Anfrage

Consultarnos

请向我方咨询

