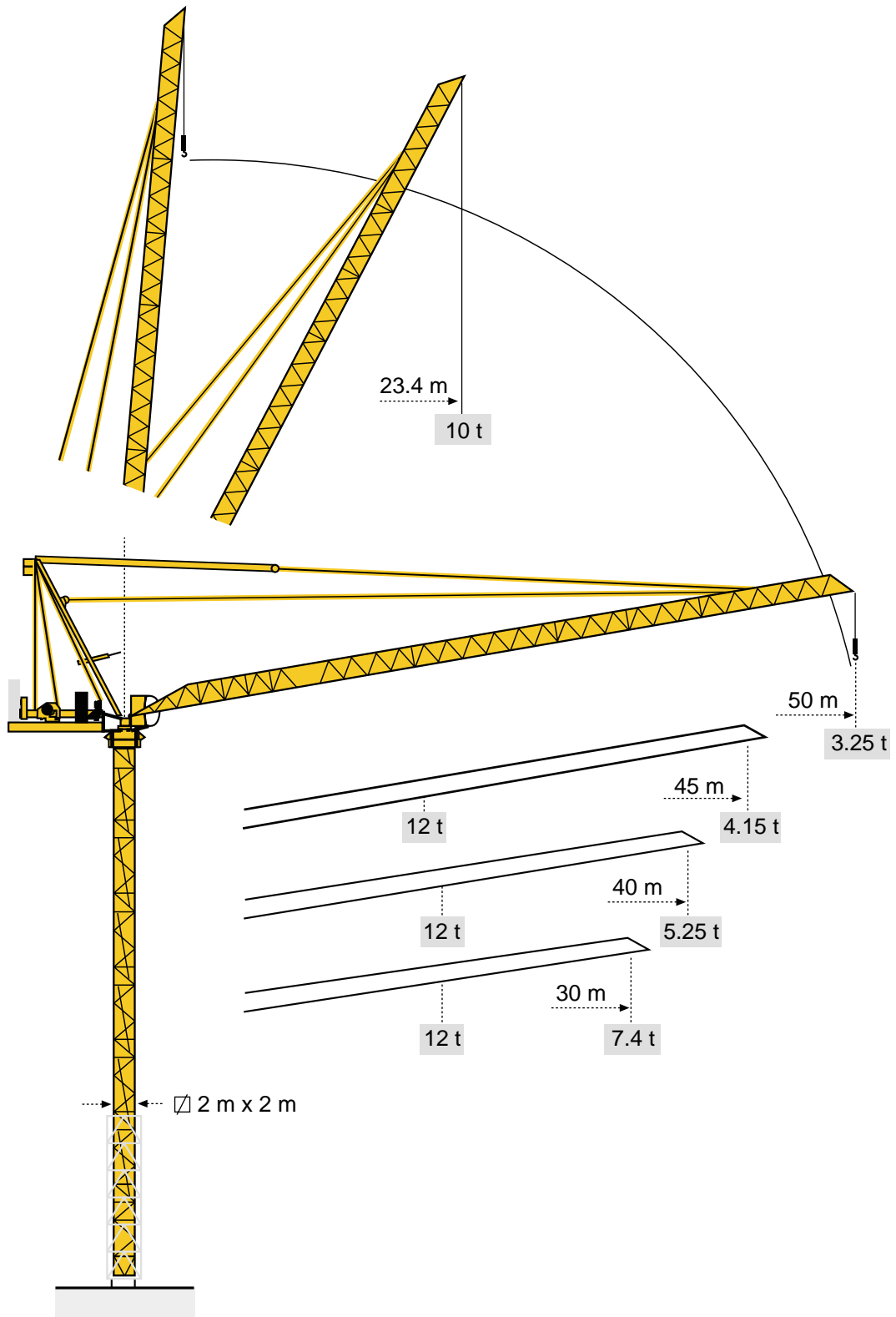
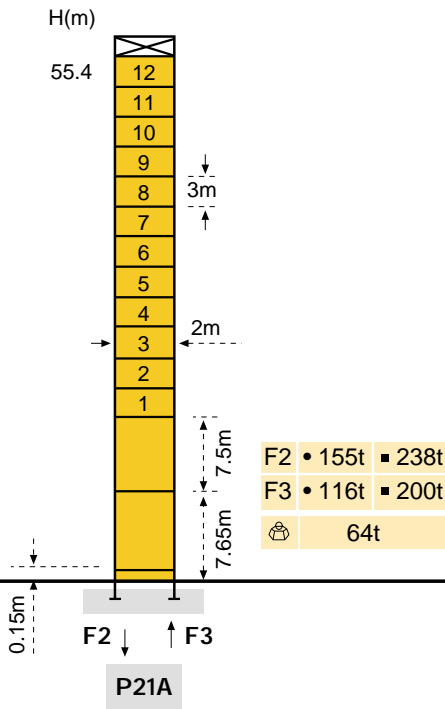


MR 220B - P21A

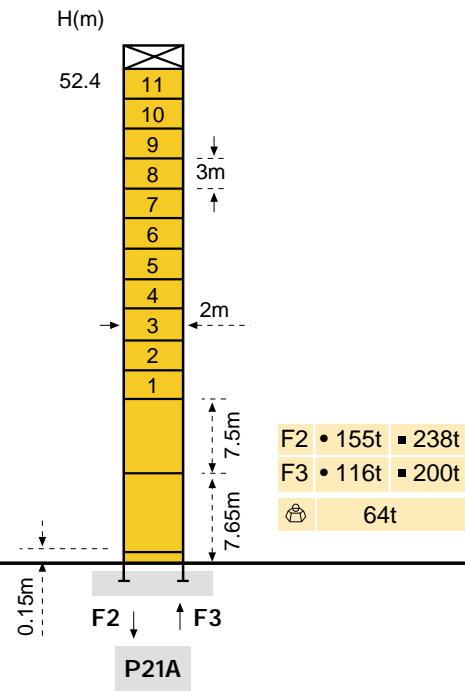


Masts / Reactions

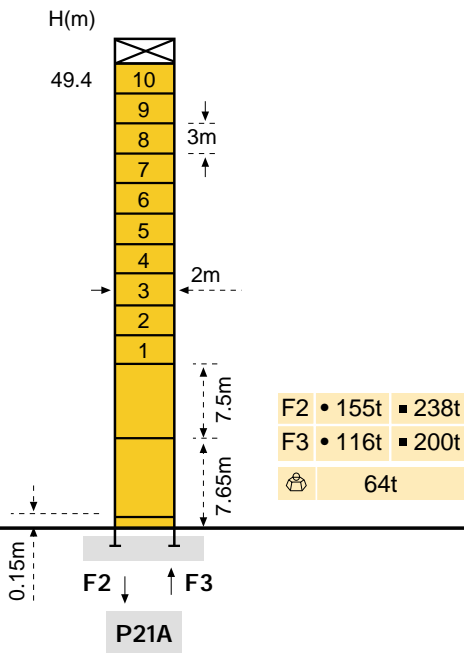
Jib = 30m



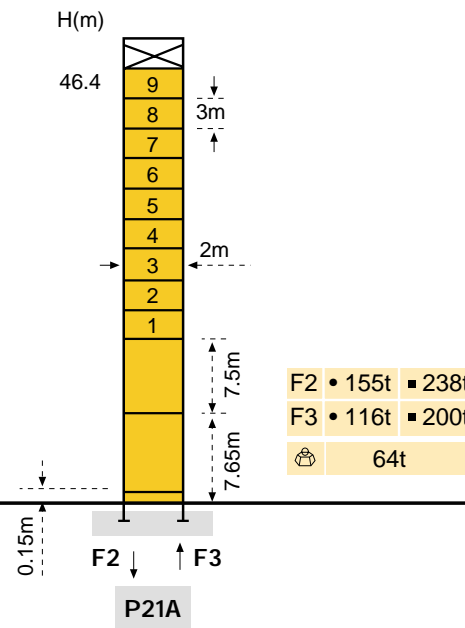
Jib = 40m



Jib = 45m



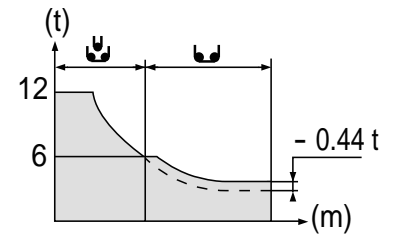
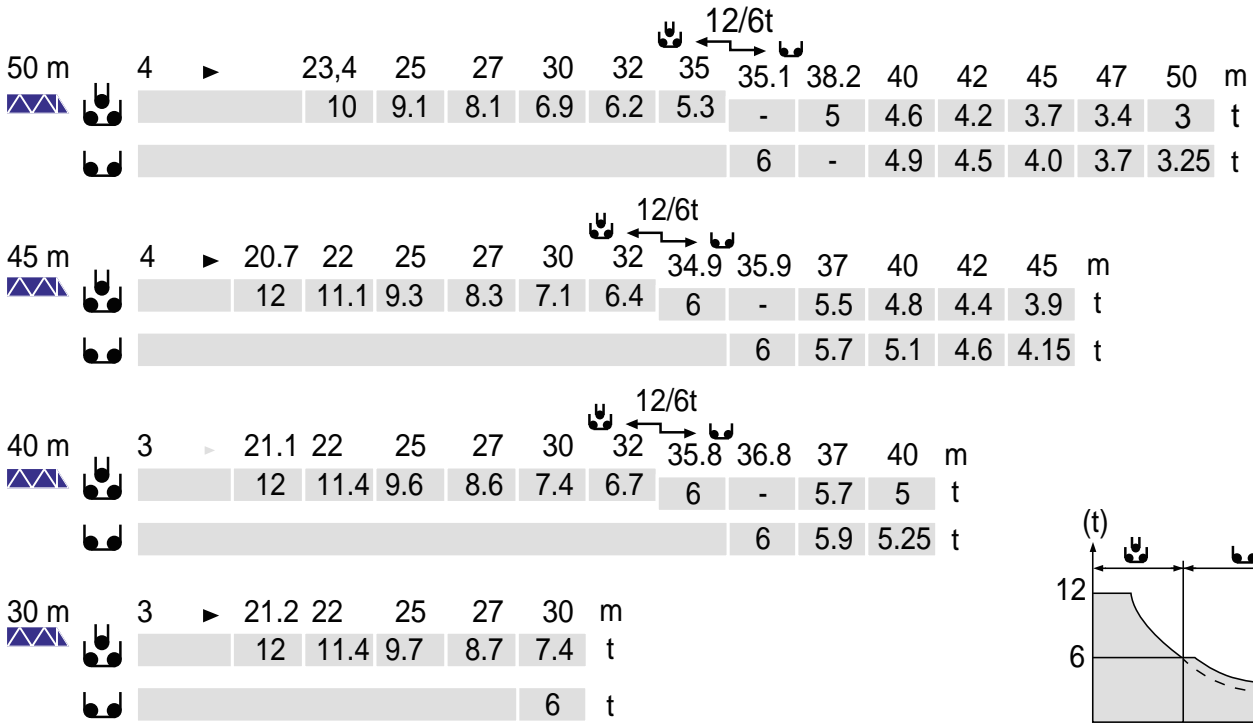
Jib = 50m



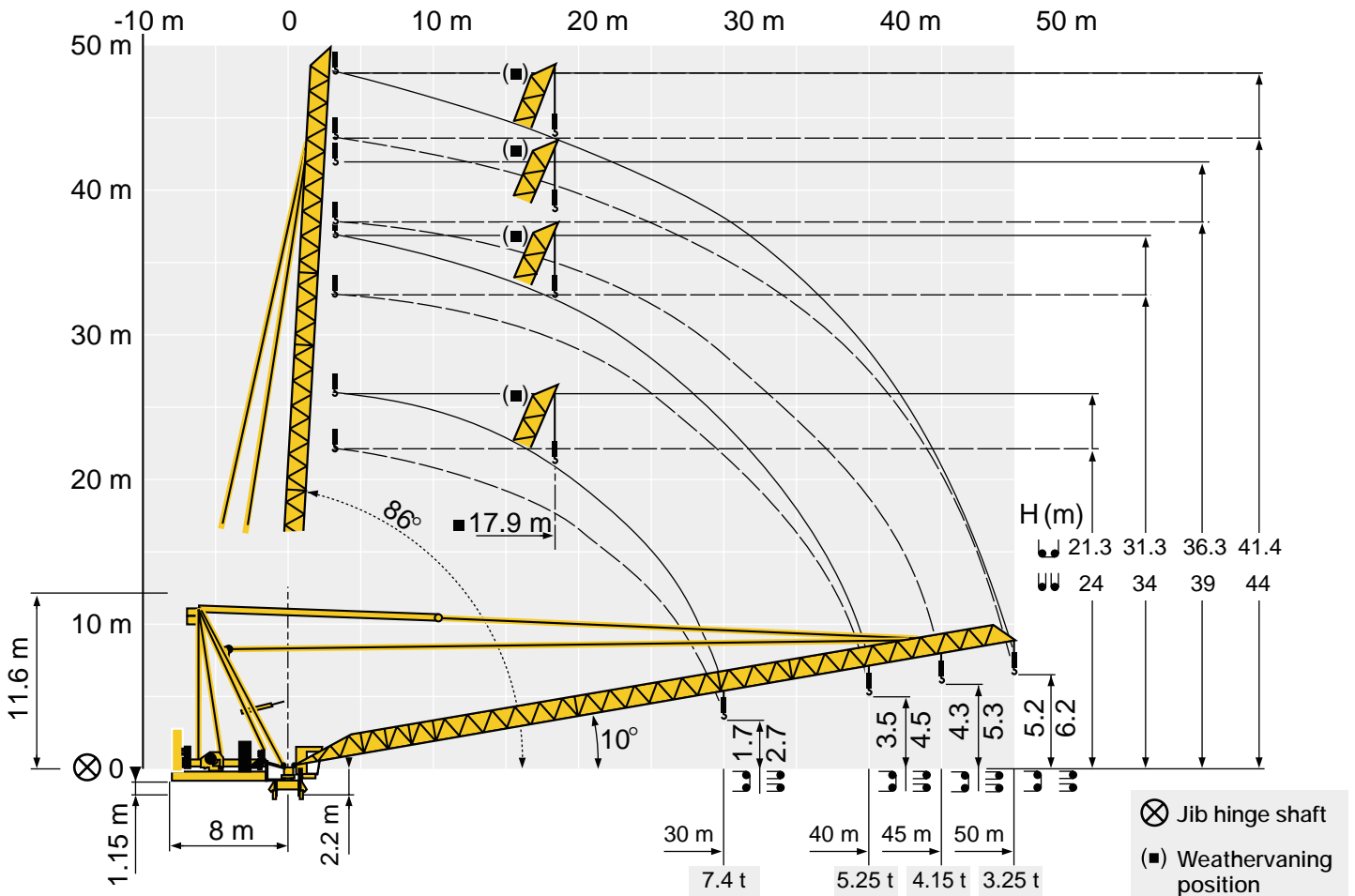
F = Reactions

- In service
- Out of service
- Without load and ballast with longest jib and maximum height










Load diagrams



Luffing Jib



Mechanisms

		m/min	t	m/min	t	ch-Ps hp	kW	
Hoisting	 75 LVF 30 OPTIMA	6		3		75	55	601m > 601*
		5	6	2.5	12			
		↓	6	↓	12			
		13	6	6.5	12			
		↓	6	↓	12			
		41	6	20.5	12			
		↓	4.5	↓	9			
		55	4.5	27.5	9			
↓	3	↓	6					
82	3	41	6					
↓	1.5	↓	3					
99	1.5	49.5	3					
Trolleying	 75 VBR 30	50 Hz	2 min		75	55		
		60 Hz	1 min 40 sec		90	66		
Slewing	 RCV 185	50 Hz	0 ⇒ 0.71 tr/min U/min (rpm)		2 x 9	2 x 6.6		
		60 Hz	0 ⇒ 0.84 tr/min U/min (rpm)		2 x 10.8	2 x 8		
Travelling	V 60A  RT 544 A1 2V	50 Hz	13.5 - 27 m/min		4 x 7	4 x 5.2		
		60 Hz	13.5 - 27 m/min					
CEI 38 	IEC 38	kVA						
400V (+6% – 10%) 50Hz		50 Hz : 160 kVA 60 Hz : 195 kVA		2000 /14				

* Please consult us.

Subject to Modification. This commercial document is not legally binding. For any technical information, please refer to the corresponding instructions.



GROVE

POTAIN 

Manitowoc Crane Group Asia Pte Ltd
Manitowoc Crane Group

26 Benoi Road
Singapore 629 898
Tel: 65-6861 7133
Fax (Admin/Sales) : 65-6862 4040
Fax (Service/Parts): 65-6862 4142
www.manitowoccrane.com

Copyright. © POTAIN 2004

MR 220B - P21A

Ref: 2004.06